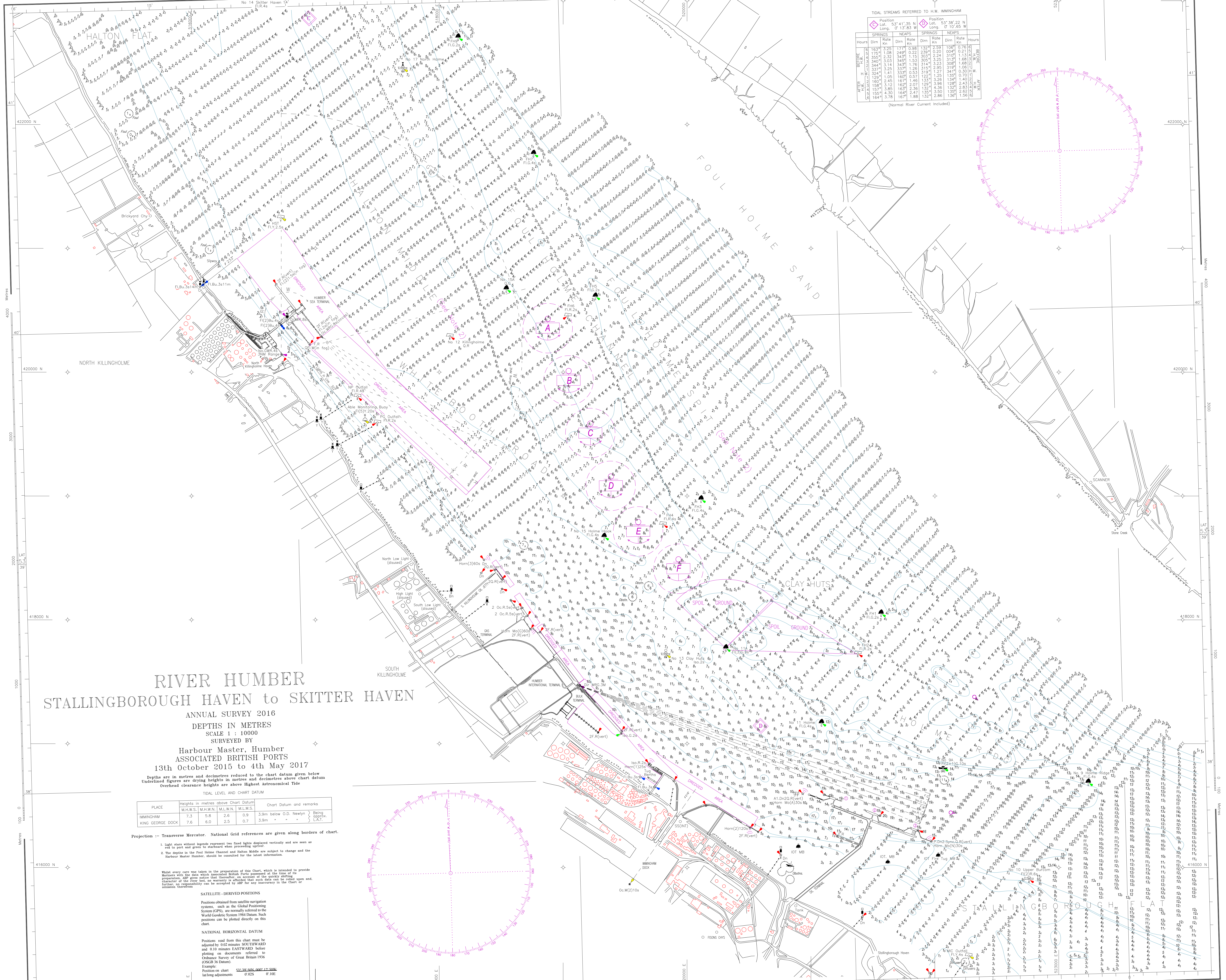


WGS 84 POSITIONS can be plotted directly on this chart

© Copyright 2017. All rights reserved. No part of this product may be reproduced in any form (including photocopying or by electronic means) without prior permission.



TIDAL STREAMS REFERRED TO H.W. IMMINGHAM

Hours	SPRINGS		NEAPS		SPRINGS		NEAPS		Hours
	Dirn	Rate Kn	Dirn	Rate Kn	Dirn	Rate Kn	Dirn	Rate Kn	
0	129°	3.25	177°	0.98	153°	2.50	109°	0.76	0
1	132°	1.08	249°	0.22	239°	0.20	004°	0.21	1
2	135°	2.50	349°	1.16	314°	1.24	310°	1.11	2
3	137°	3.03	349°	1.53	305°	2.25	313°	1.68	3
4	137°	3.25	339°	2.01	314°	2.23	308°	1.68	4
5	137°	3.25	339°	2.26	314°	2.25	313°	1.68	5
6	137°	3.25	339°	2.26	314°	2.25	313°	1.68	6
7	137°	3.25	339°	2.26	314°	2.25	313°	1.68	7
8	137°	3.25	339°	2.26	314°	2.25	313°	1.68	8
9	137°	3.25	339°	2.26	314°	2.25	313°	1.68	9
10	137°	3.25	339°	2.26	314°	2.25	313°	1.68	10
11	137°	3.25	339°	2.26	314°	2.25	313°	1.68	11
12	137°	3.25	339°	2.26	314°	2.25	313°	1.68	12
13	137°	3.25	339°	2.26	314°	2.25	313°	1.68	13
14	137°	3.25	339°	2.26	314°	2.25	313°	1.68	14
15	137°	3.25	339°	2.26	314°	2.25	313°	1.68	15
16	137°	3.25	339°	2.26	314°	2.25	313°	1.68	16

(Normal River Current Included)

RIVER HUMBER

STALLINGBOROUGH HAVEN to SKITTER HAVEN

ANNUAL SURVEY 2016
 DEPTHS IN METRES
 SCALE 1 : 10000
 SURVEYED BY
 Harbour Master, Humber
 ASSOCIATED BRITISH PORTS
 13th October 2015 to 4th May 2017

TIDAL LEVEL AND CHART DATUM

PLACE	Heights in metres above Chart Datum				Chart Datum and remarks
	M.M.S.	M.W.N.	M.L.W.N.	M.L.W.S.	
IMMINGHAM	7.3	5.5	2.6	0.9	3.9m below O.D. Newlyn
KING GEORGE DOCK	7.6	6.0	2.5	0.7	3.9m - - - - - Being approx. L.A.T.

Projection :- Transverse Mercator. National Grid references are given along borders of chart.

- Light stars without legends represent two fixed lights displayed vertically and are seen as one to port and green to starboard when proceeding upriver.
- The depths in the Foul Hole Channel and Halton Middle are subject to change and the Harbour Master Humber should be consulted for the latest information.

What every one was taken in the preparation of this Chart, which is intended to provide Mariners with the data which associated British Ports possessed at the time of its preparation, will give notice that there is no warranty or liability on the part of the Hydrographic Office, or any other authority, for any inaccuracy in the Chart or omission therefrom.

SATELLITE-DERIVED POSITIONS

Positions obtained from satellite navigation systems, such as the Global Positioning System (GPS), are normally referred to the World Geodetic System 1984 Datum. Such positions can be plotted directly on this chart.

NATIONAL HORIZONTAL DATUM

Positions read from this chart must be adjusted by 0.02 metres SOUTHWARD and 0.10 metres EASTWARD before plotting on documents referred to Ordnance Survey of Great Britain 1956 (OSGB 36 Datum).

Example:
 Position on chart
 lat/long adjustments
 OSGB 36 position 53° 39' 48.000" 12° 40' 0.025"

WGS 84 POSITIONS can be plotted directly on this chart